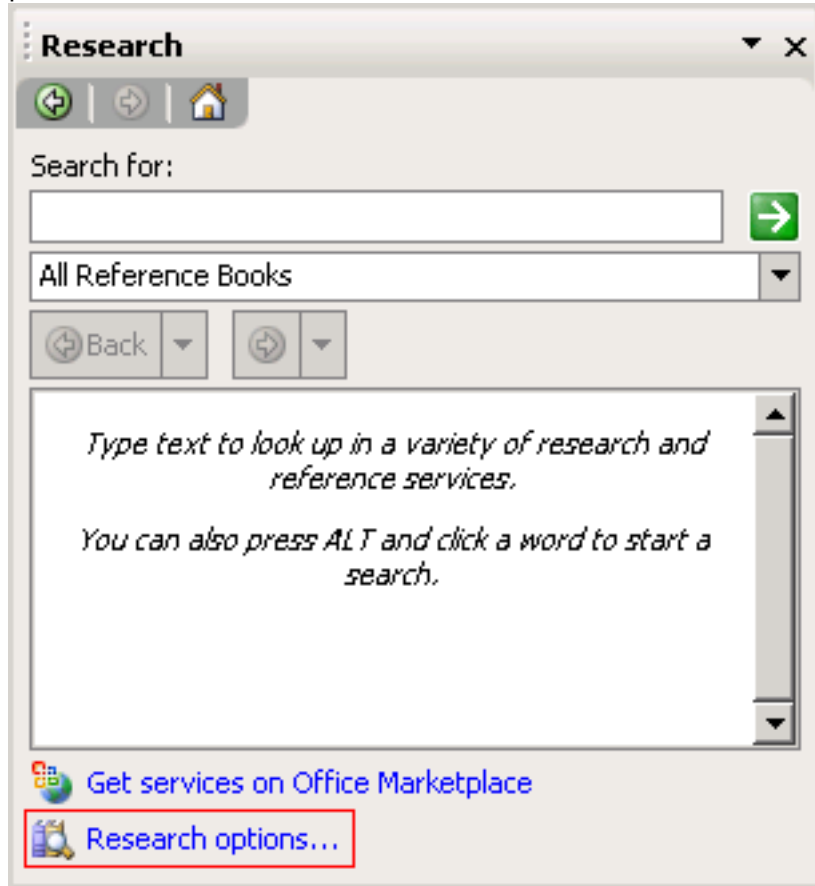


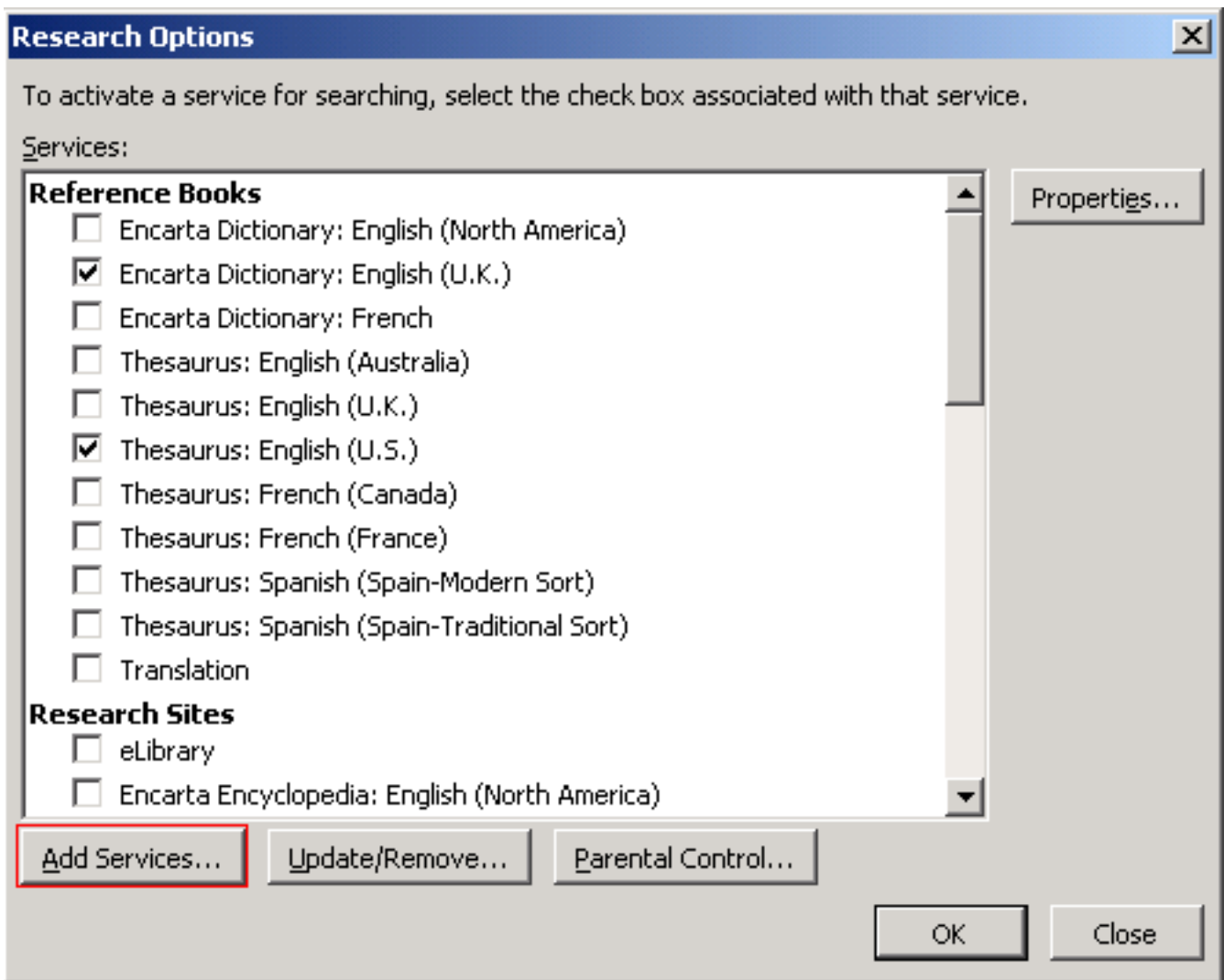
## Installation Instructions

Sun, 18/05/2008 - 09:49 — webmaster

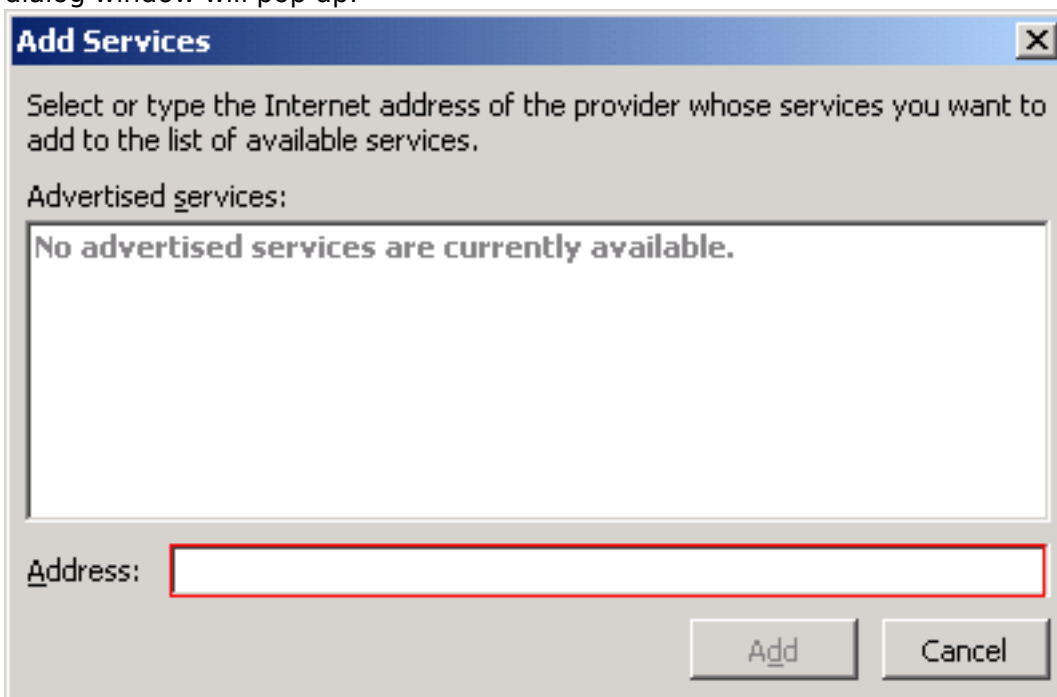
From the **Tools** menu of MS Word 2003 select **Research**. On the right you will see the following task pane:



Click on **Research options**, which are shown in a red frame in the picture above. The following dialog window will pop up:



Press the **Add Services** button, which is shown in a red frame in the picture above. The following dialog window will pop up:



In the **Address** text box, which is shown in a red frame in the picture above, write the URL shown in the frame below and press the button **Add**.

<http://www.neurolingo.gr/msors.htm?username=>

**Source URL:** [http://www.neurolingo.gr/en/web\\_services/msors/installation\\_instructions.htm](http://www.neurolingo.gr/en/web_services/msors/installation_instructions.htm)