

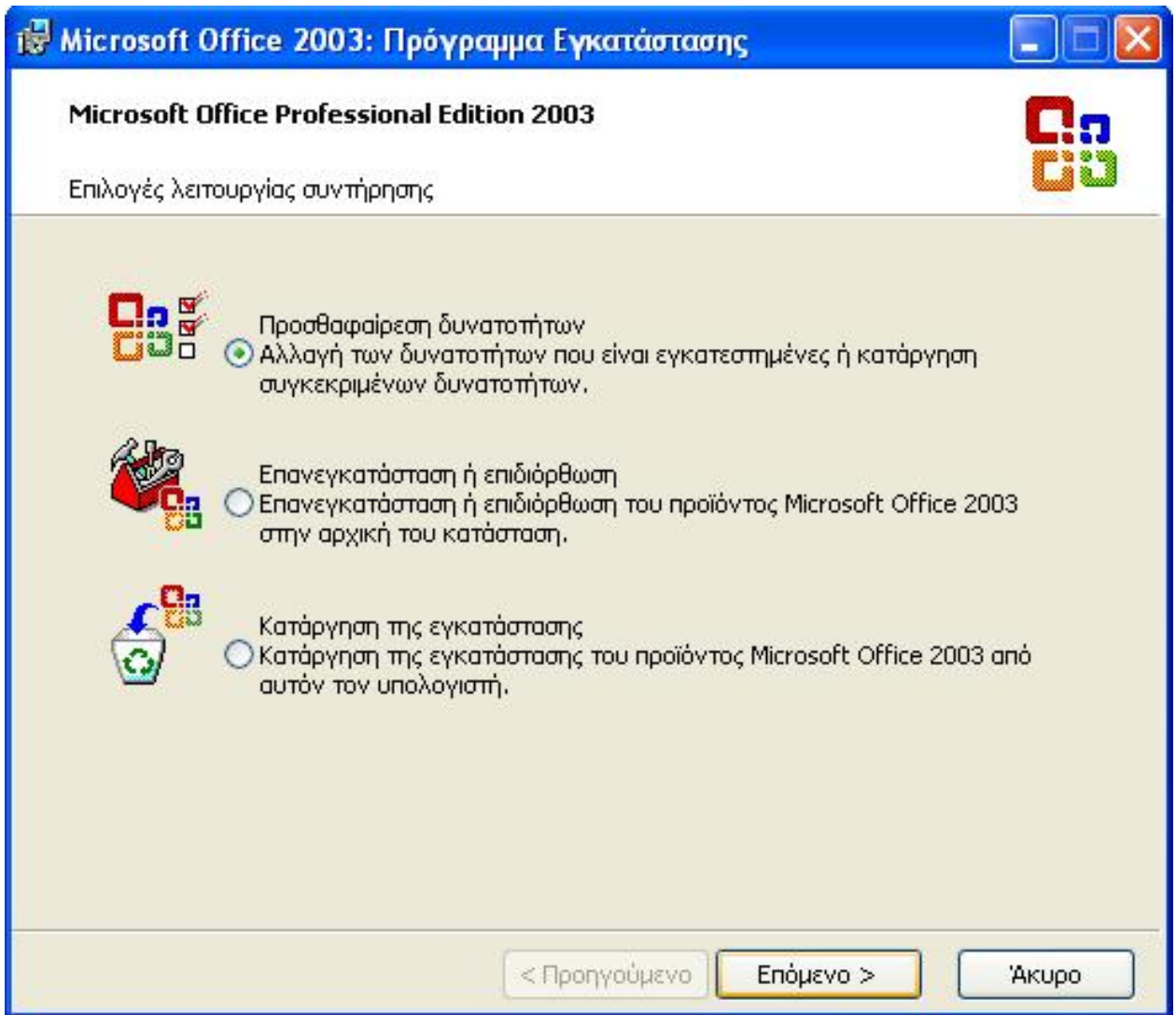
De-installation Instructions of Microsoft's Greek Proofing Tools

Sat, 17/05/2008 - 10:13 — webmaster

1. Open Control Panel and choose "Add or Remove Programs". In the window that pops up, you will see a list of installed programs; there you select the line that corresponds to MS Office, as shown in the picture below. Press the "Change" button, to alter the installed features of MS Office.



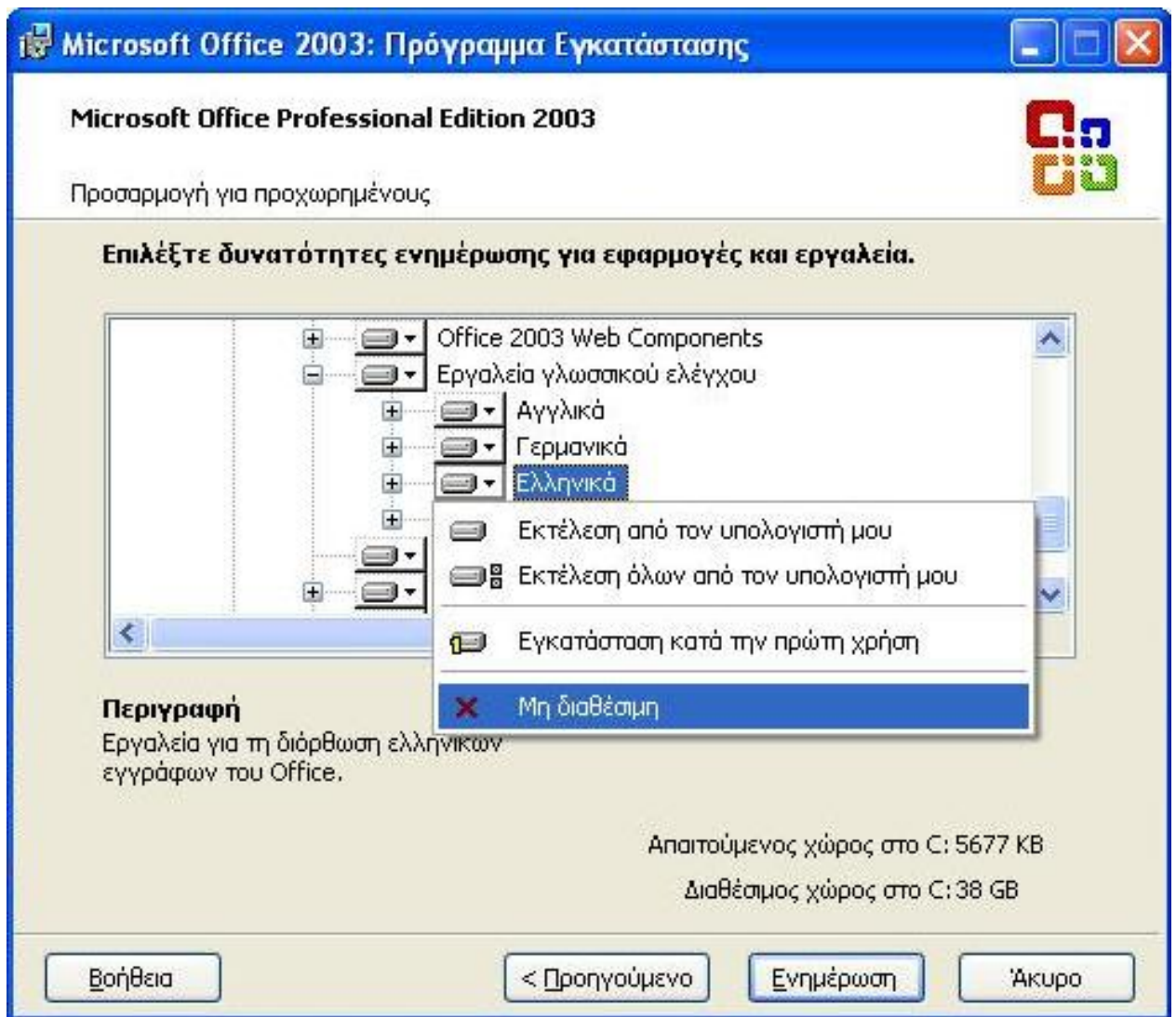
2. The installer of MS Office will ask you to choose a maintenance option. Please, choose "Add or Remove Features", as shown in the following picture, and press "Next".



- Next, the installer will ask you to choose what to install or uninstall. Choose advanced customization of applications, as shown with a red circle in the following picture. Leave the other check boxes intact and press "Next".



4. The installer will present all available MS Office components, showing which of them are installed on your PC and which not. Locate the category "Office Shared Features" and, in it, the category "Proofing Tools". There, you will find the category "Greek", which includes all Microsoft's Greek proofing tools. Click on the icon in front of the "Greek" category and in the popup menu select "Not Available", as shown in the following picture. Then, press the "Update" button of the installer. The installer will remove the Greek proofing tools of Microsoft from your PC.



5. After de-installation, run MS Word. Write Greek words with spelling errors and press F7 to call the Speller. Word will show a message saying that spelling check is complete, without flagging the spelling errors, which means that no speller is available for Greek. You can now proceed with the installation of Neurolingo's Proofing Tools for MS Office.

Source URL:

http://www.neurolingo.gr/en/products/proofing_tools/msgpt_deinstallation_instructions.jsp